

Product/Process Change Notice

This communication is to notify you that the vendor and model for the personal computer (PC) provided with the WOLF® and WOLF® G2 Cell Sorters has been changed.

PC Computer Model and Vendor

Description of Change

Personal computers (PCs) used to operate both the WOLF and WOLF G2 Cell Sorters will now be Lenovo PC, model number ThinkCentre M70q. These PCs have upgraded hardware configuration, including larger RAM size to help WOLFViewer operate more smoothly. This change only impacts new sales orders and shipments. Existing customers possessing older PC models do not need to upgrade to the latest model.

Reason for Change

We have experienced ongoing supply chain issues with our current supplier of HP PCs. The new Lenovo PC supplier is able to provide NanoCollect with enhanced configuration control and inventory consistency as well as better warranty with direct service support.

Impact

Customers will see no difference in the performance of the Lenovo PC. The specifications of the new PC are equivalent to or exceeds all product performance specifications. The Lenovo PC has a larger RAM size enabling WOLFViewer to operate more effectively for longer periods of time.

Although customers will not experience any impact due to this change, NanoCollect's field team and our distributor partners will notice some changes to the PC model. The main observable differences are the location of the wireless dongle and ethernet port. To aid in ease of installation, we are providing instructions on how to access dongle and ethernet port below:

1. Location of wireless mouse/keyboard dongle

The dongle for the computer mouse is located on the inside of the mouse. The dongle can be accessed by removing the top cover of the mouse as shown below.



To replace the cover, simply snap the cover back onto the mouse.

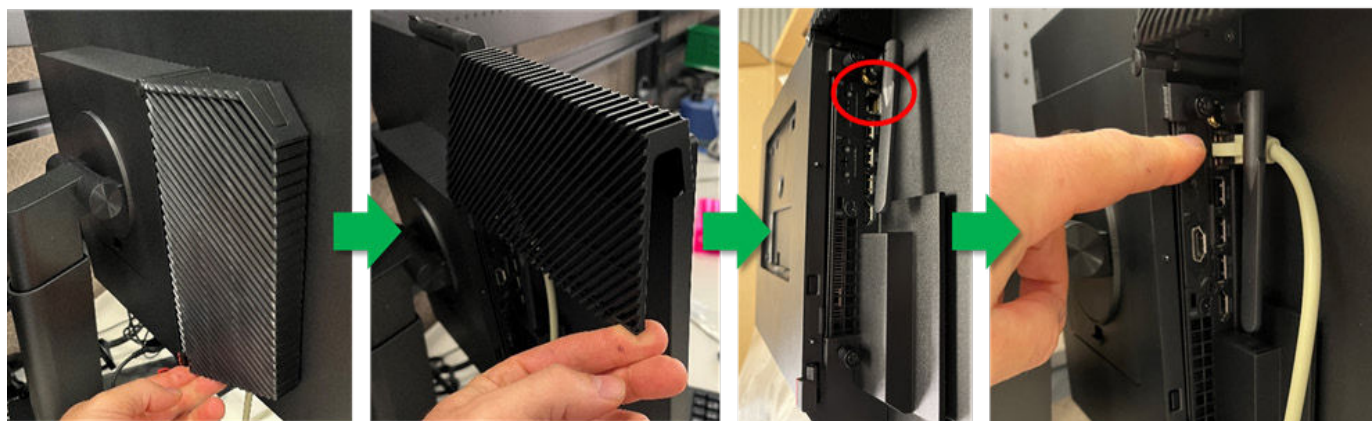
2. Location of the ethernet port is behind a cover on the back panel of the PC. The ethernet port can be accessed by opening the cover as shown below:

1. Locate the cover on the back panel of the PC

2. Swing cover outwards to open

3. Locate ethernet port

4. Insert ethernet cable into port



Product(s) Affected

Catalog No.	New Cat. No.	Description
120246	120252	Computer, Configured w/ WOLFViewer
120249	120252	Computer, Configured w/ WOLFViewer

Date of Change

Effective May 2023, all new PCs shipped either as standalone orders or in conjunction with the purchase of a WOLF or WOLF G2 cell sorter will be part number 120252: Computer, Configured w/ WOLFViewer.

Reliability/Qualifications Summary

The new model of PC has been subjected to and passed the validation testing that is standard for our PC models.

Statement of Equivalency

The new PC model is equivalent or exceeds the performance compared to the previous model. There is no change to our product recommendations or workflow.

Who to Contact with Questions

If you have any questions or concerns, please contact Mandana Farhadi, Senior Product Manager at mandana.farhadi@nanocelllect.com or your regional Channel Manager.